

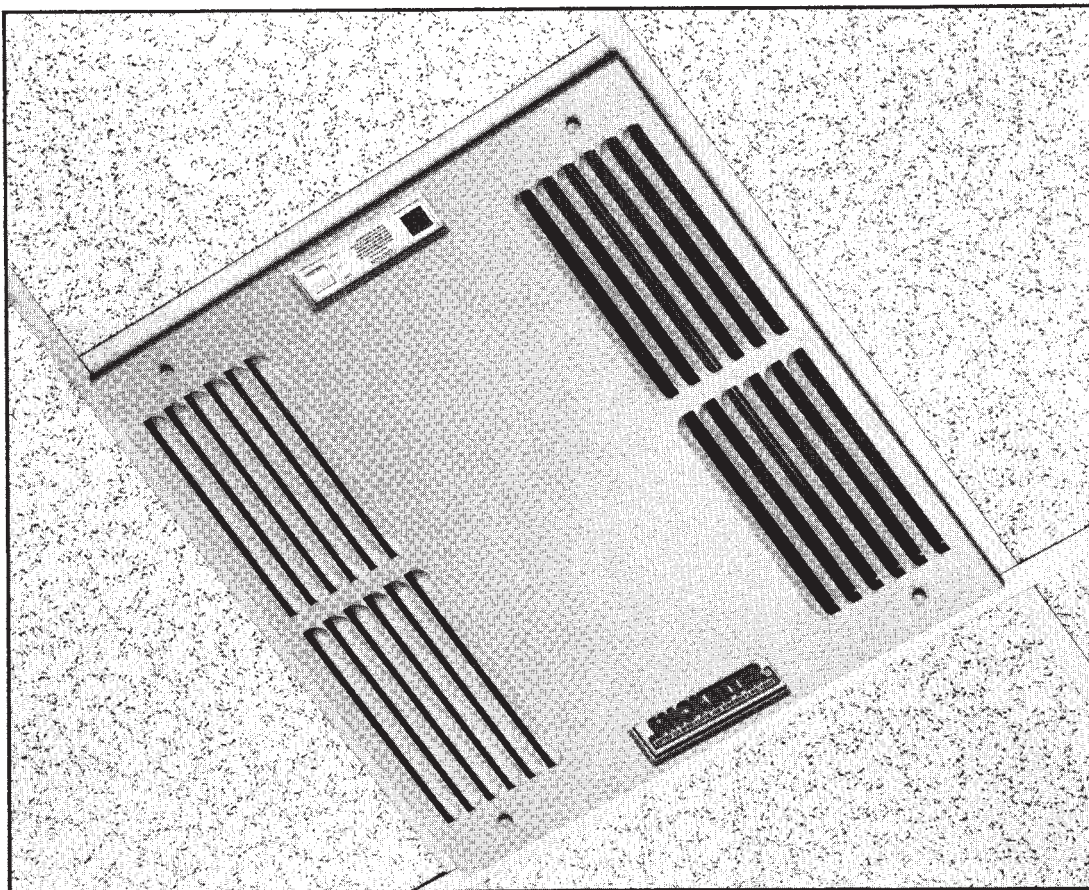
# **SMOKEETER®** / *Crystal-Aire®*

---

**Electronic Air Cleaner  
MODEL SE 22**

---

## **OWNER'S MANUAL**



---

***UAS***®  
**UNITED AIR SPECIALISTS, INC.**  
a CLARCOR company



MODEL SE 22

SPECIFICATIONS

POWER REQUIREMENTS

115 VAC, 60 HZ  
3.0 Amps (max)

ELECTRICAL CONNECTION

2 Wire leads

POWER CONSUMPTION

320 Watts (max)

AIR HANDLING CAPACITY

Low Speed: 200 CFM (339.8 M3H)  
Medium Speed: 250 CFM (424.8 M3H)  
High Speed: 300 CFM (509.8 M3H)

(Factory preset for Low-Medium Operation)

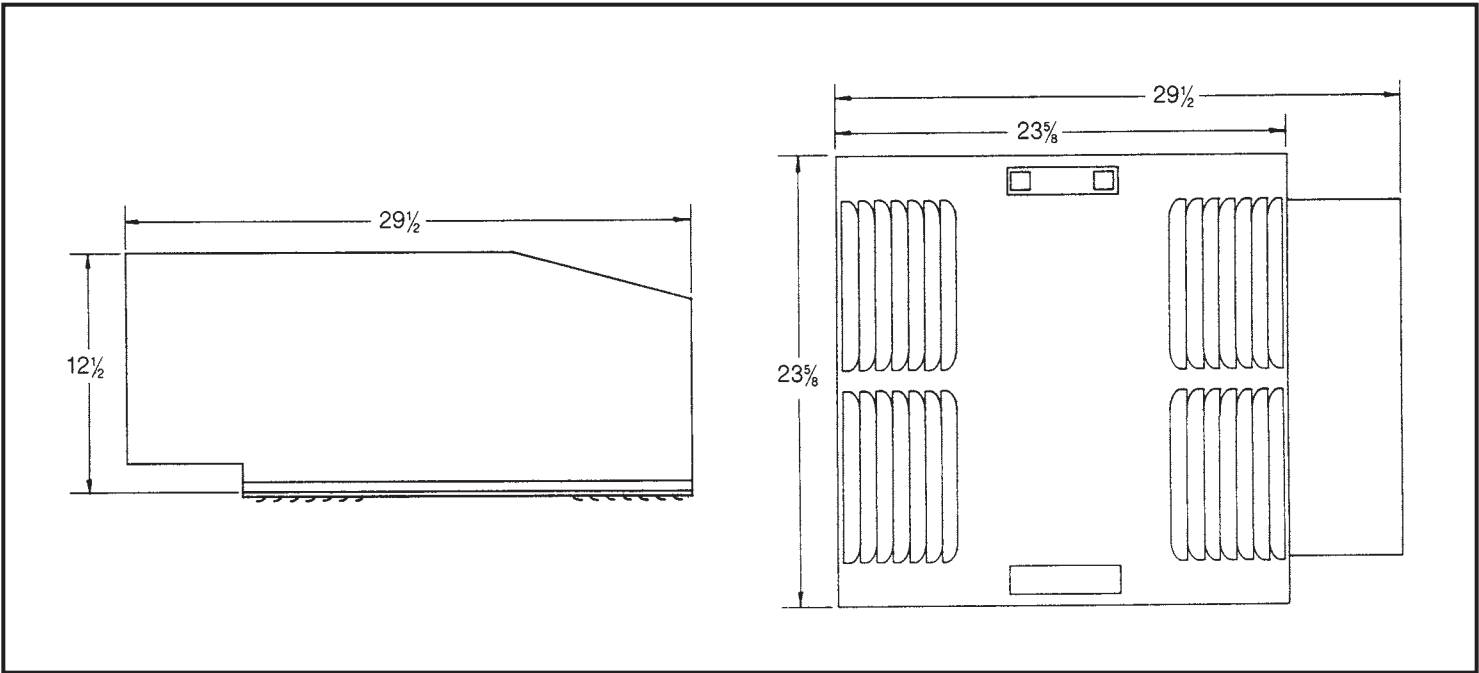
WEIGHT

HANGING . . . . . 80 lbs (36.3KG)  
SHIPPING . . . . . 85 lbs (38.6KG)

DIMENSIONS

Height	Length	Width
12½"	29½"	23⅝"
(317.5mm)	(749.3mm)	(600.1mm)

\*Nominal CFM



# SMOKEETER/CRYSTAL-AIRE

## MODEL SE 22 OWNER'S MANUAL

### TABLE OF CONTENTS

SECTION		PAGE
I.	Introduction	1
II.	Inspection of Equipment	1
III.	How Your SMOKEETER/CRYSTAL-AIRE Operates	1
IV.	Installation	3
V.	Operation	6
VI.	Cleaning	6

#### THE FOLLOWING INFORMATION IS PROVIDED FOR TRAINED SERVICE PERSONNEL ONLY

VII.	Periodic Maintenance and Troubleshooting	9
VIII.	Replacement Parts	11
IX.	Illustrated Parts Lists	13
	Wiring Diagram	17

#### **IMPORTANT NOTICE**

BEFORE OPERATION, PLEASE REMOVE ALL PACKING MATERIAL FROM INSIDE UNIT. THIS CAN INCLUDE MARKED TIE DOWN SCREWS, CARDBOARD, STYROFOAM AND PLASTIC WRAP ON CARBON FILTER. MODELS VARY IN MATERIAL USED.

## I. INTRODUCTION

Now you can breathe a lot easier ... you and everyone else who breathe the air cleaned electronically by SMOKEETER/CRYSTAL-AIRE. Your new SMOKEETER/CRYSTAL-AIRE electronic air cleaner is the most advanced product of its type on the market today. As you begin its o p e r a t i o n , we would like to remind you of a few important facts.

First, we appreciate your business ... and because we appreciate your business, we have manufactured an electronic air cleaner worthy of your consideration. SMOKEETER/CRYSTAL-AIRE is designed and engineered to rigid specifications incorporating the latest technological advances. It is built using the highest grade materials available. It is subject to rigorous quality control checks before it leaves our factory. And, SMOKEETER/CRYSTAL-AIRE is backed by a factory warranty as described on the back cover.

Second, like any piece of precision equipment, your unit needs periodic maintenance. Properly cared

for, it will operate at peak efficiency for many years.

Finally, while we hope you never have any problems, United Air Specialists, Inc. (UAS) is always ready to lend assistance. We have factory-trained distributors who cover the entire United States, Canada, Europe, Japan and Southeast Asia. Should you need information or service, contact your local distributor or SMOKEETER/CRYSTAL-AIRE Customer Service at United Air Specialists, Inc., 4440 Creek Road, Cincinnati, Ohio 45242, 1-800-252-4647.

## II. INSPECTION OF EQUIPMENT

Upon receipt of your unit, check for any shipping damage. A damaged carton indicates that the equipment may have received rough handling during shipping that may have caused internal damage. Notify your delivery carrier and enter a claim if any damage is found.

## III. HOW YOUR SMOKEETER/CRYSTAL-AIRE OPERATES

The motor/blower draws the contaminated air through an aluminum mesh prefilter, trapping the larger particles. As the smaller particles enter the ionizer section, they are given an intense positive charge. The charged particles then pass through the oppositely charged plates of the collection cell where they are retained. Clean air is exhausted and

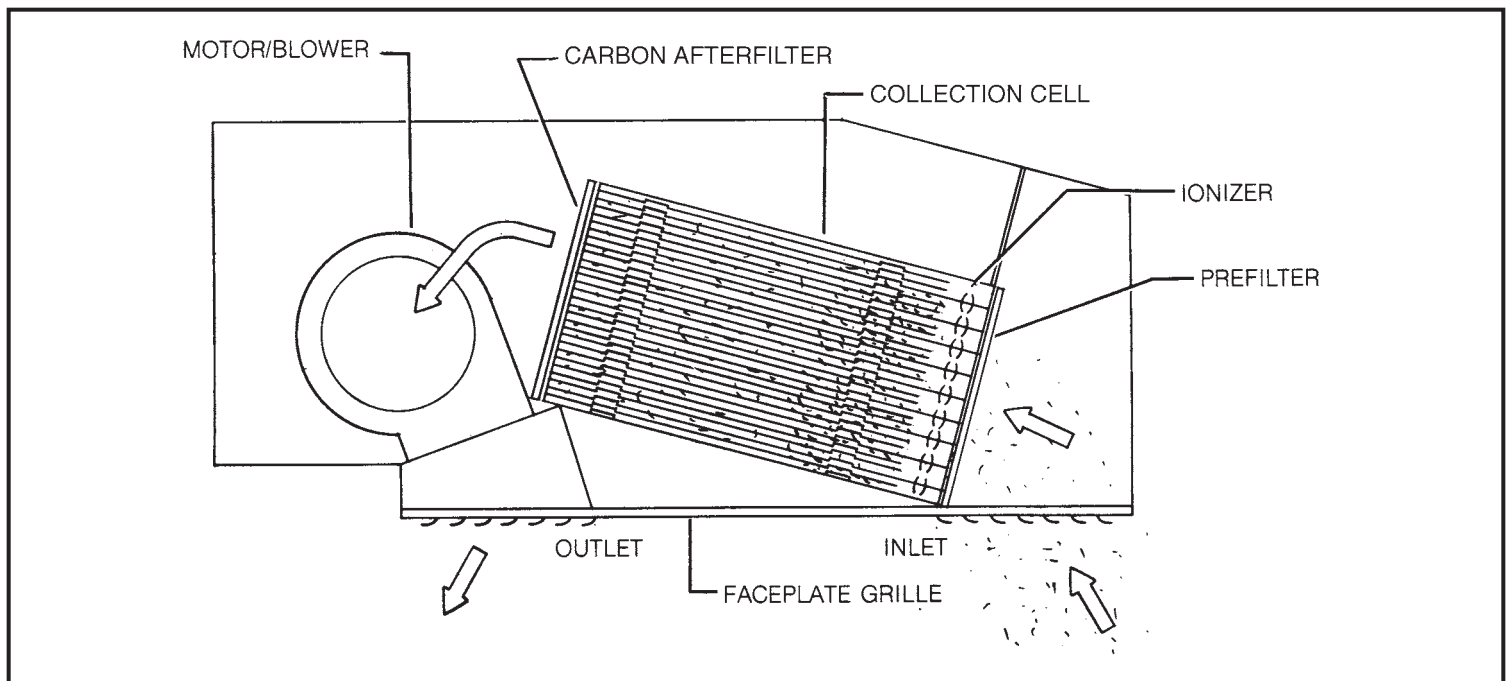


FIGURE 1

## PRIMARY COMPONENTS (see Figure 2)

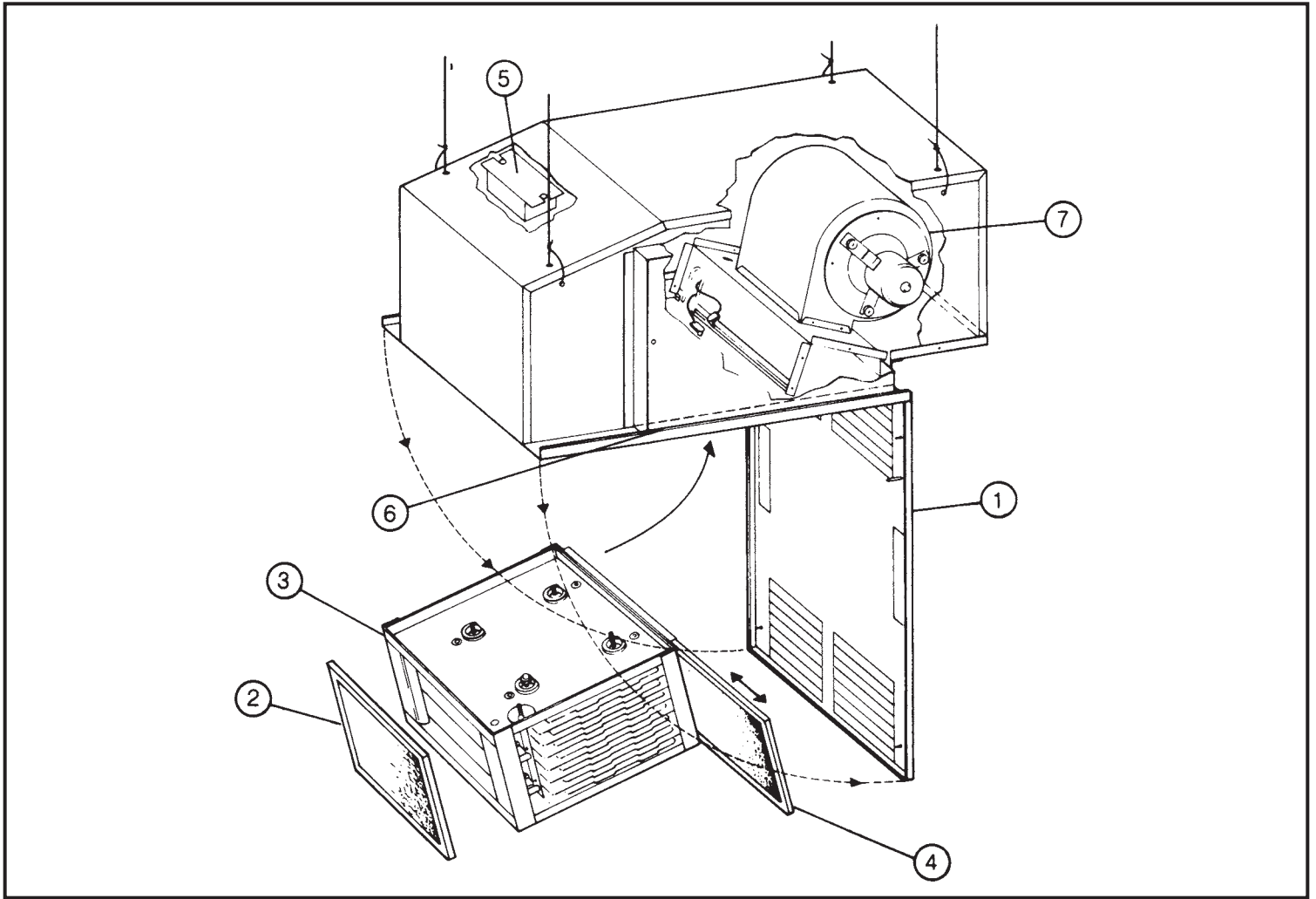


FIGURE 2

redistributed by the fixed louvers of the faceplate grille. The carbon afterfilter aids in controlling odor. See Figure 1.

1. FACEPLATE GRILLE — Serves as the inlet and discharge grille combination as well as the access panel for routine service.
2. PREFILTER — Traps the larger particles and acts as a roughing filter for the collecting components.
3. UNICELL — Is comprised of the ionizing section and the collecting section. The ionizing section is made of fine tungsten wires supported between metal plates. When high voltage is applied to these parts, a "corona" field is generated, imparting a high voltage charge on particles that pass through it.

The collection section is made up of a series of convoluted metal plates. These plates act like a magnet and attract the charged particles, removing

them from the air. The plates are alternately charged positive and ground. The positive plates repel the particles while the ground plates attract them, yielding a very high efficiency.

4. ACTIVATED CARBON AFTERFILTER — Aids in removing odors from the air.
5. POWER PACK — Is a dual high voltage supply. It supplies 11,000 volts DC to the ionizer and 5,500 volts to the collection cell.
6. CONTROLS — Provide off, low and high speed operation. A lamp indicates when cleaning is required.



7. MOTOR/BLOWER — Produces air movement through a low-speed, dynamically-balanced, forward-curve blower. The direct drive motor is three-speed, thermally-protected and secured to the blower with vibration mounts.

#### IV. INSTALLATION

**NOTE:** This product has been designed specifically for commercial applications such as offices, conference rooms and cafeteria areas. United Air Specialists assumes no responsibility for those applications unlike the aforementioned.

The Model SE 22 is designed to draw the contaminated air through the unit and exhaust clean air back into the room. The clean air is used to push contaminated air around the room and back to the inlet of the unit. Directions of air patterns and proper placement of the air cleaner should be established by your local SMOKEETER/CRYSTAL-AIRE distributor or by United Air Specialists, Inc.

The unit is designed to be installed in a drop tile-type ceiling, replacing a 2' x 2' ceiling tile. It can also be installed in place of a 2' x 4' ceiling tile although cutting of the tile will be necessary and an additional T-bar will need to be added to complete the installation (available from building supply store).

#### UNPACKING

Position the carton on the floor with the top facing up.

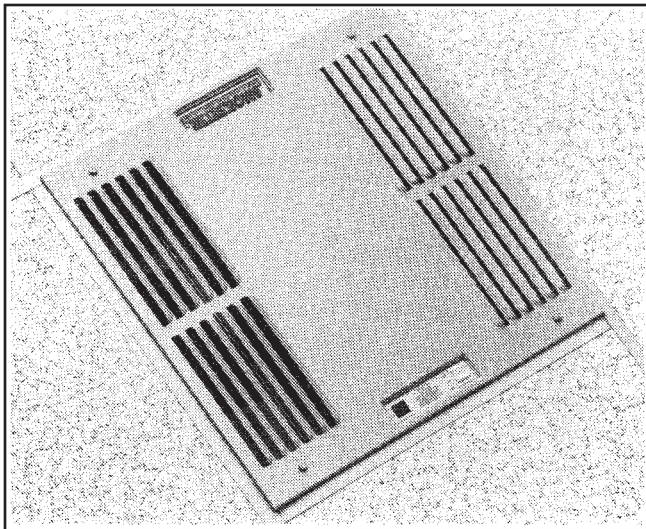


FIGURE 3  
FACEPLATE GRILLE

Open the carton and remove the following items

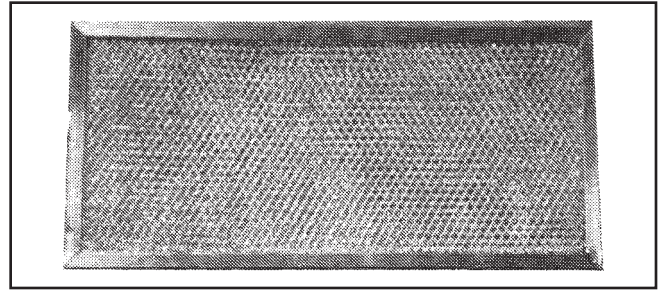


FIGURE 4  
PREFILTER

1. FACEPLATE GRILLE – Pt. No. 02-1840  
Two #8 x 1/2" sheet metal screws are attached to inside of faceplate. These will be used during installation (see Figure 3).

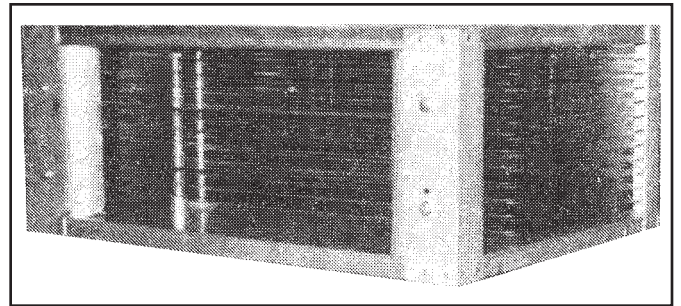


FIGURE 5  
UNICELL

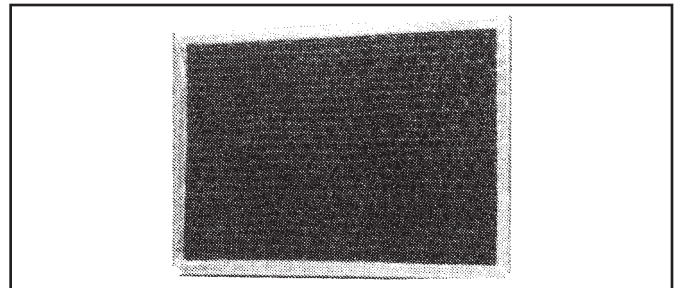


FIGURE 6  
CARBON FILTER

2. PREFILTER – Pt. No. 33-0110 (see Figure 4)

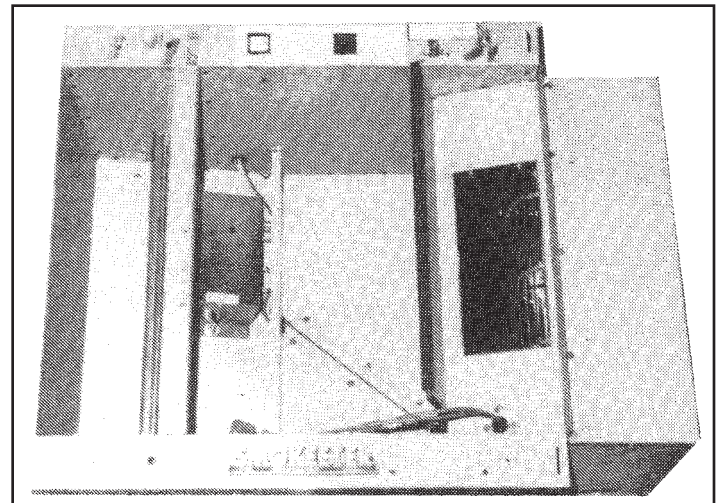


FIGURE 7  
CABINET ASSEMBLY

### 3. UNICELL/CARBON FILTER – Pt. No. 02-1718 & 33-0111

Remove two screws that secure unicell during shipment and discard (see Figures 5 and 6).

### 4. CABINET ASSEMBLY (see Figure 7)

Remove all packing material from inside cabinet.

### 5. INSTALLATION PARTS KIT – Pt. No. 03-0374

Plastic bag contains:

DESCRIPTION	PART NO.	QTY.
Hanging Wire, 12 ga.	28-0218	25 ft.
Owner's Manual	44-0734	1
Warranty Card	41-0907	1

– Remove ceiling tile where unit is to be installed.

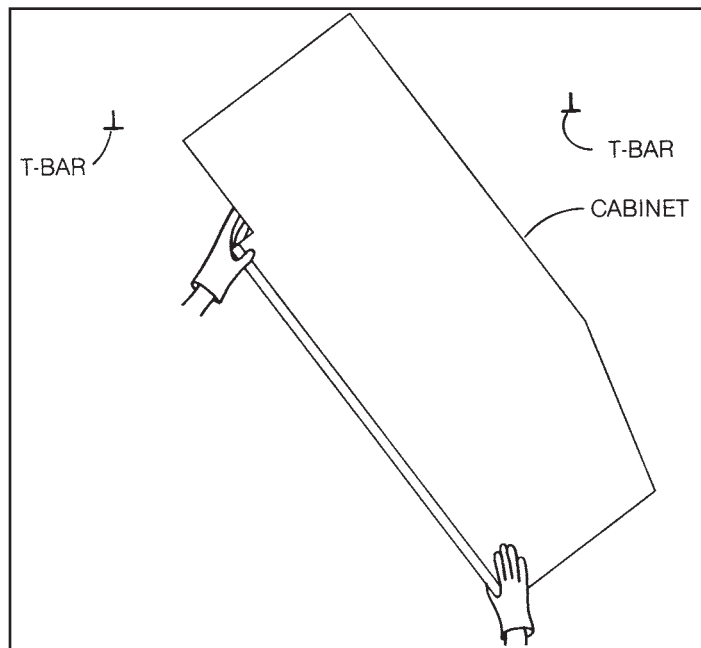


FIGURE 8  
CABINET INSTALLATION

**Check location to ensure that there is a minimum of 13" clearance above the ceiling tile.** Additional tiles adjacent to where the unit will be located should

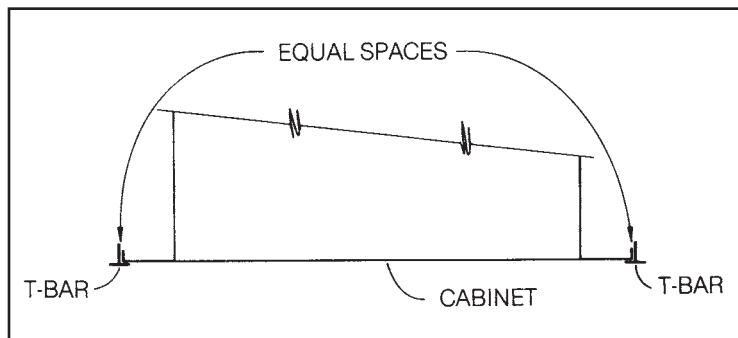


FIGURE 9  
CABINET POSITIONING

be removed to facilitate installation.

– Carefully raise cabinet into tile opening, starting

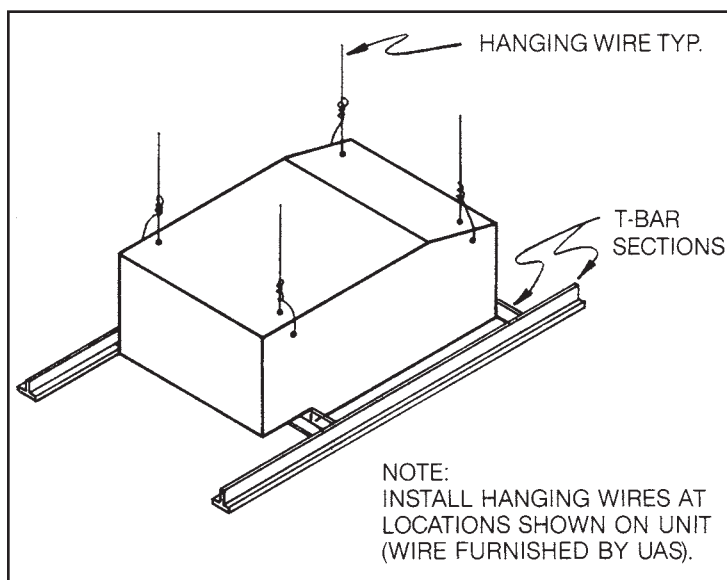


FIGURE 10  
HANGING WIRES

blower overhang first, and continue raising cabinet until it is above "T"-grid system. Gloves should be worn to protect hands (see Figure 8).

– While continuing to support the cabinet, position the flange edges of the cabinet against the T-bars (see Figure 9).

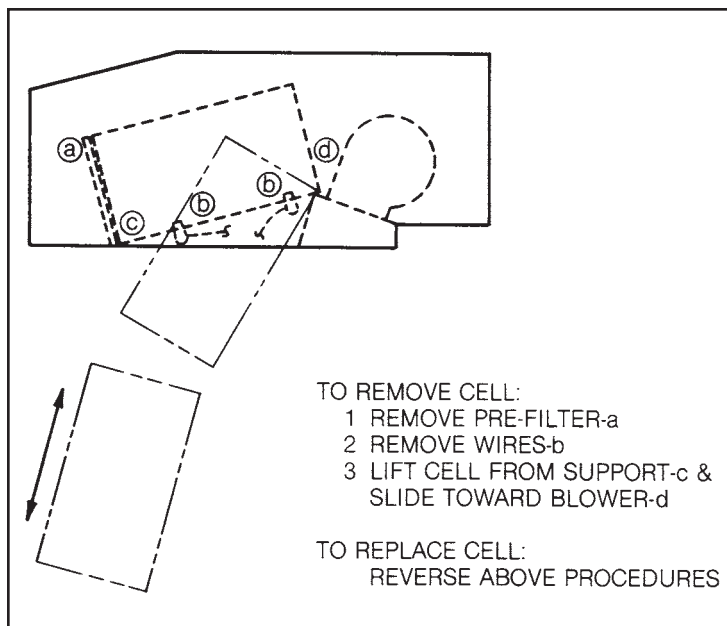


FIGURE 11  
UNICELL REMOVAL/REPLACEMENT



- After the cabinet is in place, install hanging wires from each corner of cabinet as shown in Figure 10. Cabinet must be supported from beneath at all times until hanging wires are secured.

**NOTE: Wrap all wires a minimum of five turns. Cabinet weight should be supported by hanging wires and not by T-grid system.**

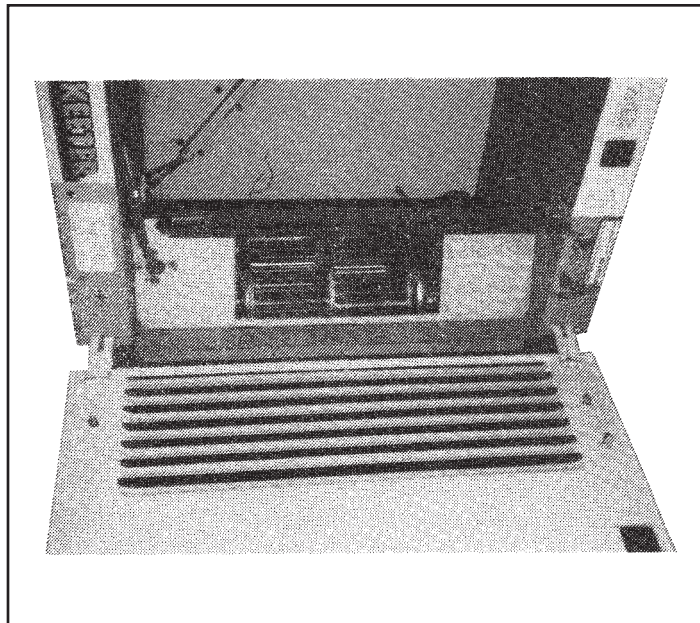


FIGURE 12  
FACEPLATE GRILLE INSTALLATION

**Bottom edge of cabinet should only touch T-grid.**

- Install unicell (see Figure 11).
- Push high voltage connectors onto contacts.
- Install prefilter.

- Install faceplate grille by sliding the two hinge legs into the slotted openings at the blower end of cabinet (see Figure 12).
- While supporting grille in the open position, install the two #8 x 1/2" sheet metal screws in the holes provided in each hinge leg. These fasteners must be installed before continuing installation.

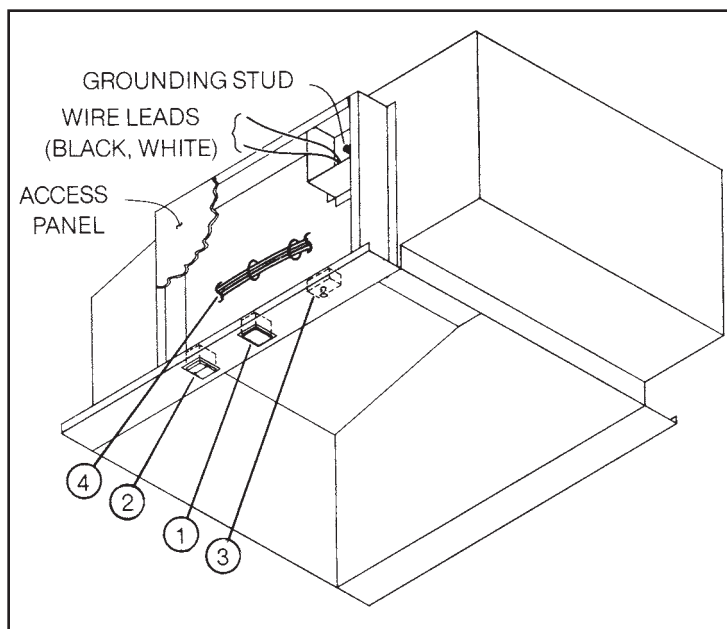


FIGURE 13  
ELECTRICAL CONNECTION

- Swing faceplate grille closed while lifting hinge side of grille simultaneously. Secure the four thumb-screw fasteners. At this point, check to ensure that faceplate grille and T-grid system are square and true. Some adjustment of cabinet may be necessary to complete installation.

## ELECTRICAL CONNECTION

**CHECK SERVICE VOLTAGE.** The unit is designed for 115 volts/single-phase/60 HZ. Remove access panel located on the exterior of the cabinet and locate the two wire leads provided for electrical connection (black, white). Appropriate fittings and conduit should be used

to conform to local electrical codes. A grounding stud has been provided for field connection (see Figure 13).

## HELPFUL HINTS

1. Electrical connection can be made to existing 115V/1/60 lighting circuits so that the unit will be "on" whenever the lights are on. The electrical branch should be checked to see that it will handle the additional load of the unit which draws 3.0 amperes and is 115 volts/single-phase/60 HZ.
2. The unit can be run to a discrete wall switch to provide more convenient control. This switch will provide "on" and "off" functions only. Speed setting will still be accomplished by using the control switch on the unit.

## V. OPERATION

For best results, your SMOKEETER/CRYSTAL-AIRE should be turned on before the air becomes contaminated, ensuring clean air at all times.

The indicator lamp shows that your SMOKEETER/CRYSTAL-AIRE power supply is operating properly. As momentary shorts occur, the light will indicate a loss of voltage by flickering. If it fails to glow, the components may need cleaning (see cleaning instructions) or the components may need servicing (call your local distributor). A two-speed switch allows you to set the fan speed between 200 and 250 CFM. For normal operation, the unit can be run at 200 CFM. If you notice a decrease of cleaning efficiency, increase the blower speed to increase the unit's effectiveness.

**FOR YOUR INFORMATION** — The Model SE 22 has been thoroughly tested prior to shipment from the factory. There may, however, be some initial arcing of the components at start-up. The noise should cease after a few hours of operation.

## VI. CLEANING

This section is provided for cleaning and periodic maintenance. The internal components must be removed prior to cleaning.

**WARNING:** Servicing this product for purposes other than routine cleaning of the collection components should be performed by trained service personnel. Any effort to exceed this service by non-qualified personnel may lead to bodily injury and/or equipment failure.

**CAUTION:** The unit should be inspected frequently and dirt removed to prevent excessive accumulation which may result in flashover or fire damage. An electrical interlock is provided for protection — do not defeat its purpose.

Periodic cleaning is necessary to maintain efficiency and is confined to the unicell and mesh filter. A regular cleaning schedule is suggested. Frequency of cleaning depends upon the concentration and type of contaminants. Your local distributor will be able to help you set up a schedule

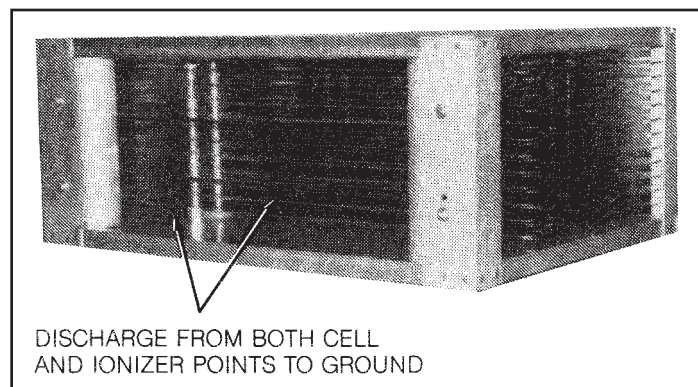


FIGURE 14  
GROUNDING PROCEDURE

based on your requirements. If a distributor is not available in your area, please contact United Air Specialists, SMOKEETER/CRYSTAL-AIRE Customer Service, 1-800-252-4647.

## CLEANING INSTRUCTIONS

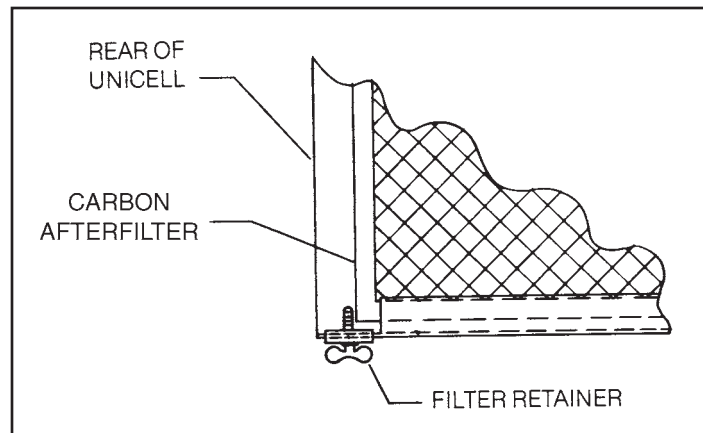


FIGURE 15  
AFTERFILTER REMOVAL

- Turn unit off, open faceplate grille and wait 15 seconds for high voltage charge on unicell to bleed off.
- Lift tab and remove prefilter.
- For added safety, manually discharge the unicell by placing the blade of a common screwdriver (with insulated handle) across the ionizer wire and cabinet ground, and also one of the charged cell plates to cabinet ground (see Figure 14).

- Unplug high voltage leads from unicell.
- Remove the unicell from the cabinet (see Figure 11).
- Remove the carbon afterfilter by loosening filter retainer screw and sliding filter from the rear of the cell (see Figure 15).
- The unicell and prefilter can be cleaned by soaking in a hot solution of SMOKEETER/CRYSTAL-AIRE brand detergent for about 30 minutes.

**CAUTION:** Do not use temperatures exceeding 160°F and do not steam clean as this may cause permanent damage to the unicell. If detergent other than Smokeeter is used, care must be taken to assure that it contains an aluminum inhibitor so that it does not attack the aluminum components. Be sure to follow manufacturer's cleaning instructions.

- Remove the components from the detergent bath and immediately flush away any residue; rinse thoroughly with hot water. Shake off excess water and let components dry for 30-60 minutes. Set the unicell so that its plates are in a vertical position for drainage. Do not reinstall the unicell until it is thoroughly dry.

**THE FOLLOWING SECTIONS  
ARE FOR THE USE OF TRAINED  
SERVICE PERSONNEL ONLY.**

**WARNING — THE FOLLOWING  
PROCEDURES WILL EXPOSE  
HAZARDOUS LIVE AND MOVING PARTS.  
DISCONNECT AIR CLEANER BEFORE  
PROCEEDING.**

- Vacuum the interior of the cabinet to remove any loose lint or dust that may have accumulated.
- Clean the faceplate grille by wiping down with a lint-free, soft cloth and a suitable household cleaner.
- Reinstall the carbon filter and secure filter in place with filter retainer.
- Reinstall the unicell, making sure the high voltage plug-in connectors are securely connected to the unicell.
- Re-install prefilter.
- Secure faceplate grille and turn unit on.

If the indicator lamp flickers or does not come on at all, the unicell assembly was not thoroughly dry. Air passing through the unit will dry out the unicell and the lamp will eventually turn on.

## VII. PERIODIC MAINTENANCE AND TROUBLESHOOTING

All SMOKEETER/CRYSTAL-AIRE air cleaners are manufactured to give years of trouble-free performance. As with any piece of equipment, however, breakdowns can occur. Due to the simplicity of design, breakdowns are restricted to these components:

- motor/blower replacement kit
- power pack
- unicell
- control switch (low-off-high)
- safety switch (faceplate)
- indicator lamp

This section contains the troubleshooting procedure and a guide which will enable you to determine the cause of most problems. Refer to Section VIII for replacement parts.

### COMPONENT FUNCTION

1. Power Pack — the electrical circuit is designed around the power pack which contains the necessary components to convert 115 Volts, single-phase, 60 HZ (115/1/60 AC) to the high voltage DC required for the unicell.
2. Unicell Ionizing Section — the ionizing section supports three tungsten wires charged positive to a nominal 11,000 volts DC. The baffle plates parallel to the wire are at ground potential. Its function is to electrically charge the contaminated particles as they pass through it.
3. Unicell Collecting Section — the collecting section

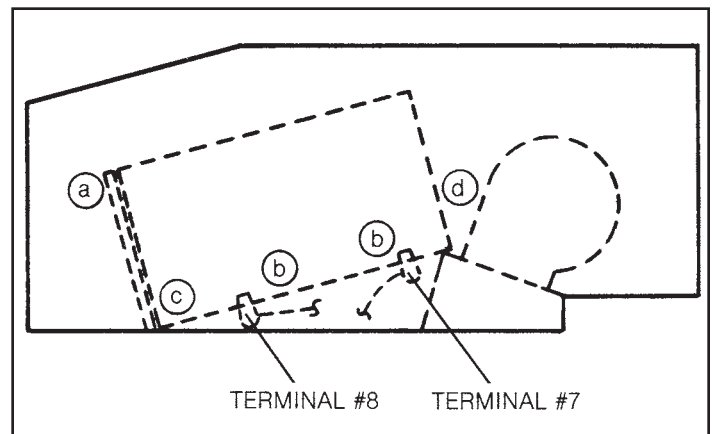


FIGURE 18  
HIGH VOLTAGE SUPPLY

consists of alternately charged plates. Plates are alternately charged with a nominal 5,500 volts DC positive. The field between the plates forces the charged particles to the ground plates and removes them from the airstream.

4. Carbon Filter — aids in odor removal.
5. Motor/Blower — draws in contaminated air and discharges the clean air back to the room.

### HOW THE HIGH VOLTAGE IS SUPPLIED TO THE COMPONENTS

The power pack supplies high voltage DC to the ionizing and collecting sections of the unicell by the use of high voltage lead wires. Two separate terminals are used on the output side of the pack. Terminal #8 supplies nominal 11.0 KV DC positive to the ionizer. Terminal #7 supplies 5.5 KV DC to the cell. The plug-



in connectors located within the cabinet feed the voltage to the cell and ionizer section of the unicell through mating connections on the bottom of the unicell. The plug-in connectors are provided in two different lengths to ensure that they are connected to the proper locations (see Figure 18).

#### TOOLS REQUIRED FOR TROUBLESHOOTING:

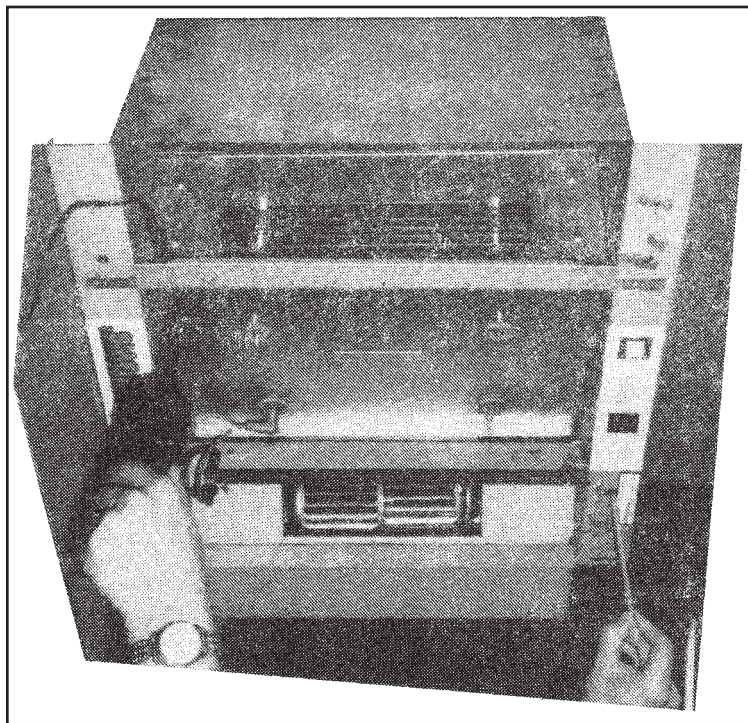


FIGURE 19

- Screwdriver — (common type) 8" or longer with insulated handle.
- Volt-Ohm Meter — for measuring low voltage input (115 VAC) and continuity (OHMS).
- High Voltage Probe (DC) positive polarity — for checking the high voltage power supply (minimum range from 0 to 15 KV DC).

#### HOW TO MEASURE HIGH VOLTAGE

For accurately measuring the high voltage, a 15 KV minimum scale high voltage probe capable of measuring positive polarity is required. Refer to the instructions provided with the high voltage probe for safe and proper operation.

#### MEASURING UNICELL IONIZER VOLTAGE

1. Turn the unit off, open the faceplate grille (this will disengage the safety interlock). Remove the pre-filter from the cabinet.
2. Connect the ground clip of the positive polarity probe to the cabinet.

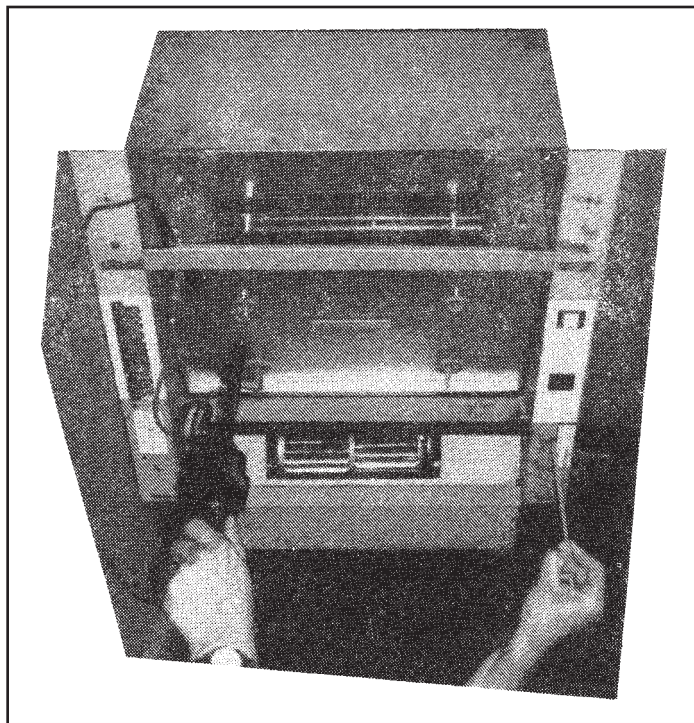


FIGURE 20

**CAUTION:** Always ground the high voltage probe to a solid ground connection on the metal cabinet.

3. Turn unit control switch to the "on" position and cautiously engage the safety interlock switch. (Refer to Figure 19)

**CAUTION:** Be sure to disengage safety interlock switch after measuring voltages.

4. Place the probe's tip on the ionizer contact stud and measure the positive DC voltage. The voltage should read 10.0 to 11.0 KV DC.

If measurements are abnormal, refer to the troubleshooting guide on page 12 for cause and correction.

## MEASURING UNICELL COLLECTOR VOLTAGE

1. Connect the ground clip of the positive polarity probe to the side of the cabinet.
2. Engage the safety interlock switch and measure the collector high voltage by placing the probe's tip on the cell contact stud. The voltage reading should be 4.0 to 6.0 KV DC.

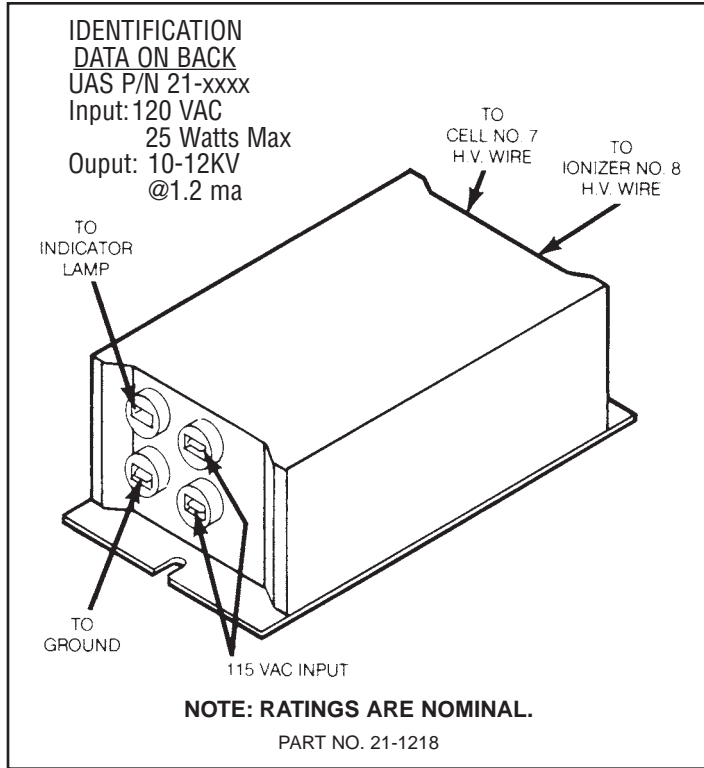


FIGURE 21

If measurements are abnormal, refer to the trouble-shooting guide on page 12 for cause and correction.

## CHECKING THE POWER PACK OUTPUT

1. Remove the prefilter and unicell from the cabinet.
2. Check the high voltage lead wires to make sure there are no cuts, frayed wire or breaks in the insulation.
3. Engage the safety interlock switch and measure the ionizer output voltage by placing the probe's tip on the #8 high voltage plug-in connector. (Refer to Figure 20)

Output reading without the unicell should read 11 to 13 KV DC positive.

4. To measure the collection cell output voltage, place the high voltage probe's tip on the #7 high voltage plug-in connector.

Output without the unicell should read 6 to 7 KV DC positive.

## CHECKING LAMP TERMINAL OUTPUT (See Figure 21)

## CHECKING LAMP TERMINAL OUTPUT

Disconnect unit indicator lamp (neon lamp).

Connect a good neon lamp to pack terminal "light" and to pack terminal "GND" or cabinet ground. If lamp does not light, replace pack. If lamp lights, check wiring and unit indicator lamp.

## CHECKING MOTOR/BLOWER

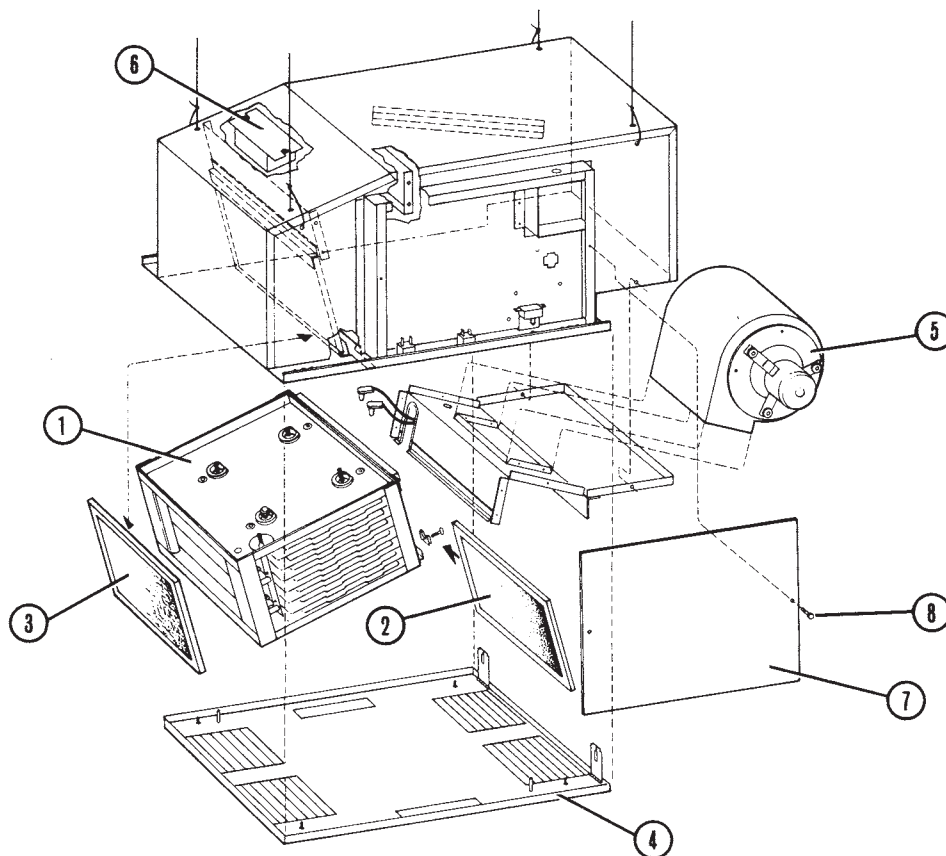
The motor in the SE 22 is of the permanently-lubricated-type and requires no oiling. Maintenance is limited to periodically (about twice a year) cleaning the exterior of the motor housing and also removing any dust or lint that may have accumulated on the blower wheel. With this minimum amount of service, years of trouble-free operation can be expected.

## TROUBLESHOOTING GUIDE

Problem	Possible Cause	Corrective Action
A. Control switch on, indicator lamp off, motor operates.	<ol style="list-style-type: none"> <li>1. Defective lamp.</li> <li>2. Faulty connection to lamp.</li> <li>3. Loss of high voltage.</li> </ol>	<ol style="list-style-type: none"> <li>1. Replace lamp.</li> <li>2. Check connection to lamp.</li> <li>3. Check power pack.</li> </ol>
B. Control switch on, indicator lamp on, motor does not operate.	<ol style="list-style-type: none"> <li>1. Faulty motor.</li> <li>2. Foreign object locking motor.</li> <li>3. Faulty control switch.</li> <li>4. Connector not properly connected (at control switch).</li> </ol>	<ol style="list-style-type: none"> <li>1. Replace motor.</li> <li>2. Clean foreign object from motor.</li> <li>3. Replace control switch.</li> <li>4. Check connection at control switch.</li> </ol>
C. Control switch on, motor and lamp off.	<ol style="list-style-type: none"> <li>1. No power to unit.</li> <li>2. Safety interlock switch on faceplate grille not engaged.</li> <li>3. Safety interlock switch defective.</li> <li>4. Control switch defective.</li> </ol>	<ol style="list-style-type: none"> <li>1. Check circuit.</li> <li>2. Engage safety interlock switch.</li> <li>3. Replace safety interlock switch.</li> <li>4. Replace control switch.</li> </ol>
D. Motor operates on high or low speed only.	<ol style="list-style-type: none"> <li>1. Control switch defective.</li> </ol>	<ol style="list-style-type: none"> <li>1. Replace control switch.</li> </ol>
E. Poor air quality.	<ol style="list-style-type: none"> <li>1. Unicell dirty.</li> <li>2. Unicell malfunctioning.</li> <li>3. Unicell installed improperly.</li> <li>4. High voltage plug-ins not connected.</li> <li>5. Unit being operated on too low a speed.</li> </ol>	<ol style="list-style-type: none"> <li>1. Clean unicell.</li> <li>2. Check unicell for:               <ol style="list-style-type: none"> <li>a. Foreign matter between plates.</li> <li>b. Ionizer wire loose or broken.</li> <li>c. Defective insulators.</li> </ol> </li> <li>3. Install unicell as shown in Figure 11.</li> <li>4. Connect plug-ins as shown in Figure 18.</li> <li>5. Increase blower speed.</li> </ol>
F. High voltage output low or zero*.	<ol style="list-style-type: none"> <li>1. Loss of input 115 VAC.</li> <li>2. Unicell malfunctioning.</li> <li>3. Power pack defective.</li> </ol>	<ol style="list-style-type: none"> <li>1. Determine loss of input voltage.</li> <li>2. Check unicell for:               <ol style="list-style-type: none"> <li>a. Foreign matter between plates.</li> <li>b. Ionizer wire loose or broken.</li> <li>c. Defective insulators.</li> </ol> </li> <li>3. Replace power pack.</li> </ol>

\*REFER TO WIRING DIAGRAM AND ILLUSTRATED PARTS

## IX. ILLUSTRATED PARTS

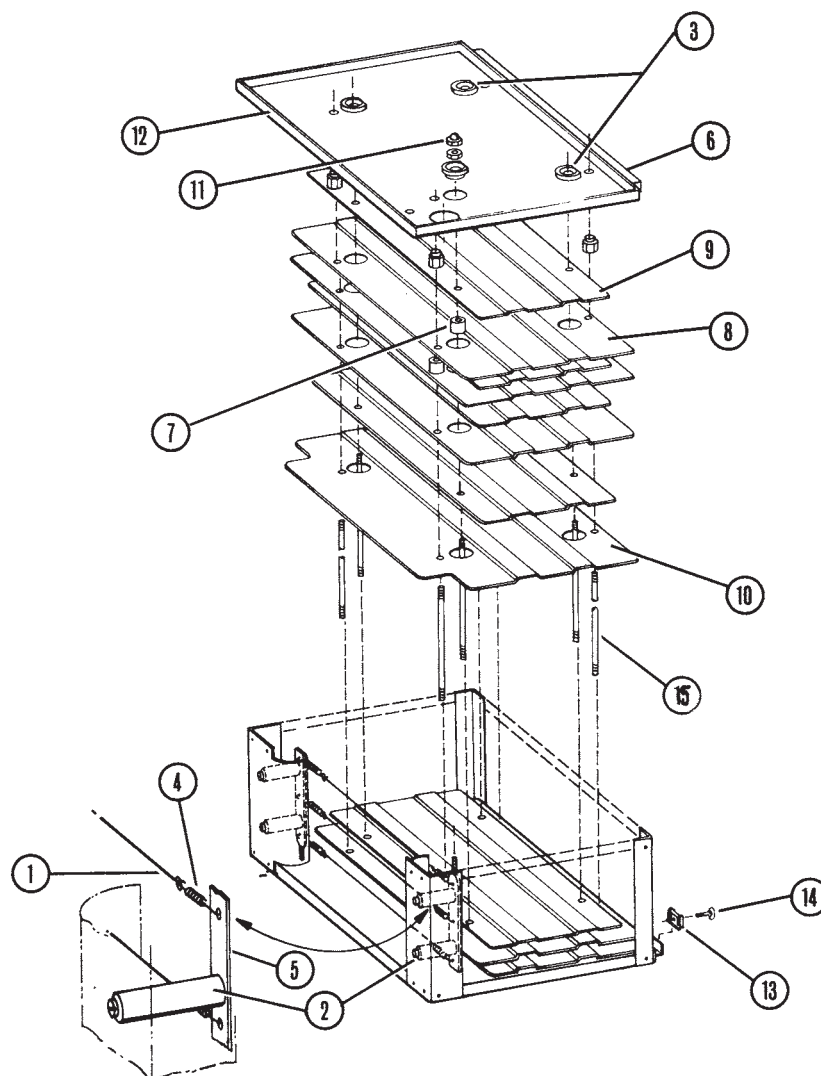


### MODEL SE 22 FINAL ASSEMBLY (01-0669)

ITEM NO.	PART NO.	DESCRIPTION	QUANTITY
1	02-1718	UNICELL	1
2	33-0111	CARBON FILTER	1
3	33-0110	ALUMINUM MESH PREFILTER	1
4	02-1840	FACEPLATE GRILLE ASSEMBLY	1
4A	03-0832	FACEPLATE FASTENER KIT*	1
5	03-0382	MOTOR/BLOWER REPL. KIT	1
6	21-1218	POWER PACK (GREY PLASTIC CONSTRUCTION)	1
7	10-2117	ENCLOSURE COVER	1
8	30-0328	SCREW, HEX WASHER HEAD	2
	42-0168	EDGE GASKET*	18"
	03-0398	NAMEPLATE & FASTENER KIT*	1
	03-0399	LABEL KIT (W/LOGO BACKUP*	1
		LABEL, CONTROL PLATE LABEL, WIRING DIAGRAM LABEL, UNICELL INSTALLATION INSTRUCTIONS)	

\*NOT SHOWN

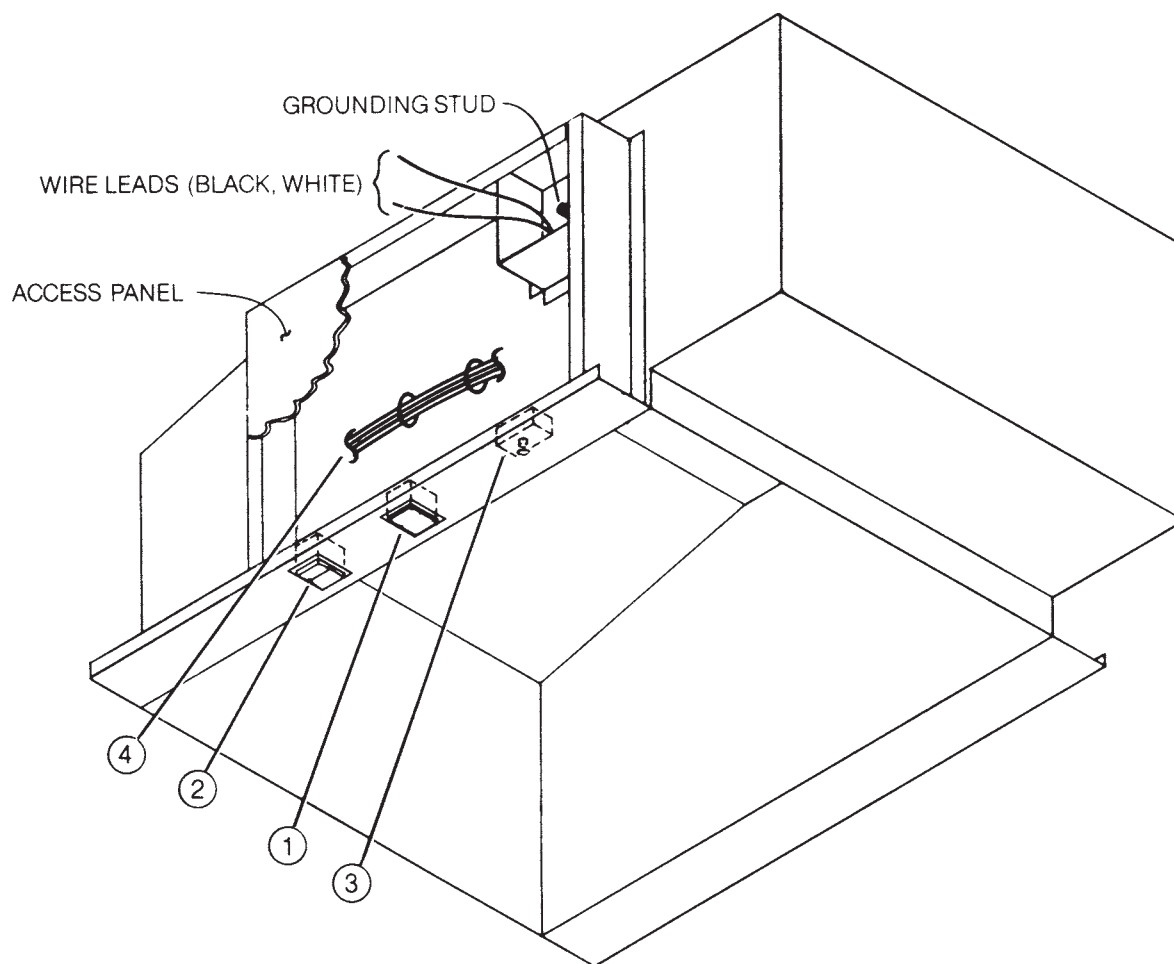




## UNICELL ASSEMBLY (02-1718)

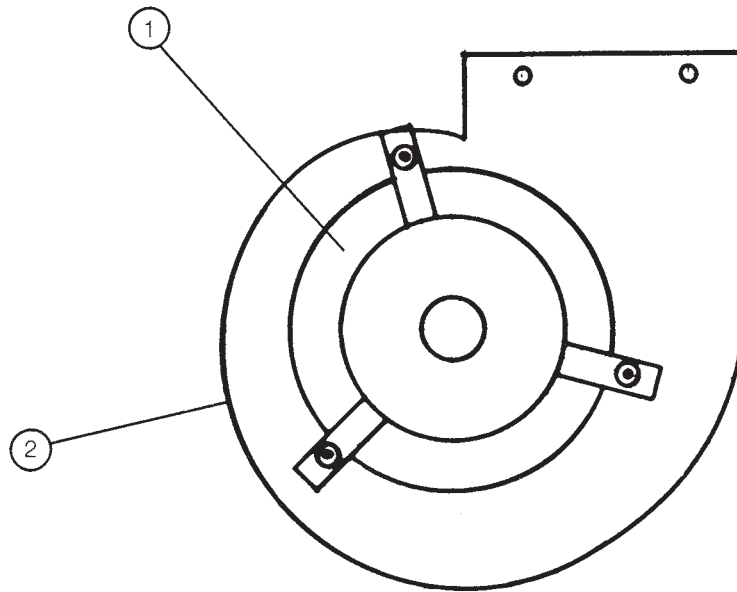
ITEM NO.	PART NO.	DESCRIPTION	QUANTITY
1	02-6275	IONIZER WIRE WITH EYELETS	3
2	37-0014	CERAMIC IONIZER INSULATOR (2" LONG)	4
3	37-0008	PVC CELL INSULATOR	8
4	36-0037	IONIZER WIRE SUPPORT SPRINGS	6
5	18-0581	IONIZER WIRE SUPPORT BAR	2
6	10-2584	FILTER TRACK	2
7	35-0067	SPACER	92
8	10-0158	CELL PLATE (GROUND)	9
9	10-0157	CELL PLATE (HOT)	12
10	10-1376	CELL PLATE (IONIZER)	2
11	30-0030	LOCKNUT NYLON 1/4-20	16
12	10-1372	UNICELL END PLATE	2
13	30-0163	RETAINER CLIP	1
14	30-0165	RETAINER	1
15	35-0222	CELL ROD	8





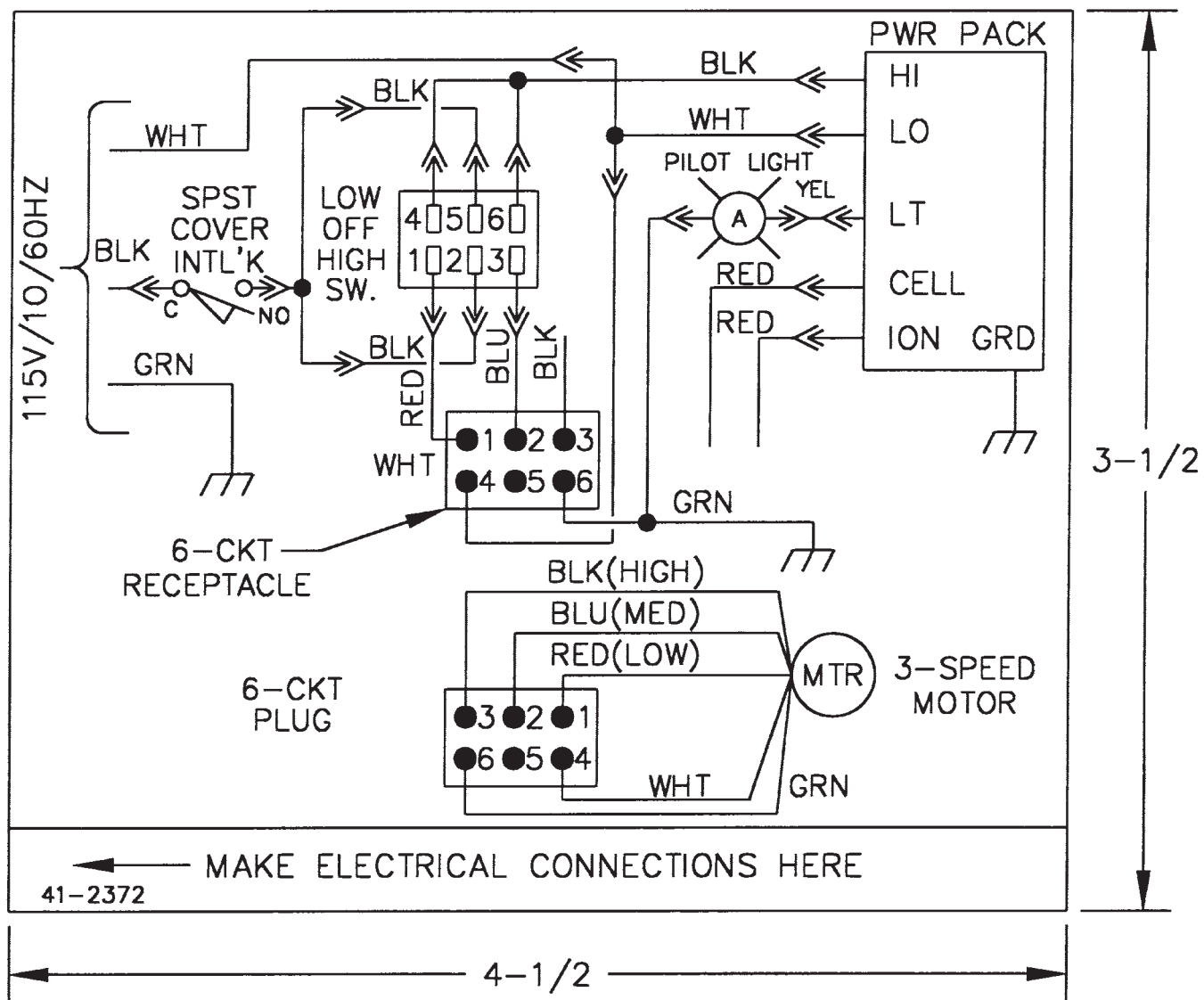
## ELECTRICAL COMPONENTS ASSEMBLY

ITEM NO.	PART NO.	DESCRIPTION	QUANTITY
1	20-1241	PILOT LIGHT	1
2	20-1240	LOW-OFF-HIGH ROCKER SWITCH	1
3	20-1239	FACEPLATE INTERLOCK SWITCH	1
4	02-2596	CABINET WIRING HARNESS	1
NOT SHOWN	02-2617	H.V. LEAD REPLACEMENT KIT	1



## MOTOR/BLOWER REPLACEMENT KIT (03-0382)

ITEM	PART NO.	DESCRIPTION	QUANTITY
1	03-0386	MOTOR (115/1/60) W/MTG. HARDWARE	1
2	03-0395	BLOWER HOUSING W/MTG. HARDWARE	1



WIRING DIAGRAM







UNITED AIR SPECIALISTS, INC.,  
LIMITED WARRANTY

All equipment manufactured and sold by UAS against defective parts and for one year from date of shipment to Purchaser, except that commercial or industrial cleaners (other than engineered systems) are warranted for three years from such date. This warranty is subject to the limitations in UAS' standard terms and conditions provided to Purchaser. Any unauthorized repairs or modifications or abnormal use or misuse of equipment will void this warranty. In no case will UAS' responsibility or warranty extend to equipment not purchased from UAS.

THIS WARRANTY IS EXCLUSIVE AND IN LIEU OF ALL OTHER WARRANTIES, WRITTEN, ORAL, OR IMPLIED, INCLUDING ANY IMPLIED WARRANTY OF MERCHANTABILITY, FITNESS FOR A PARTICULAR PURPOSE OR NONINFRINGEMENT.

As the exclusive remedy for any defects in the equipment, UAS will exchange or repair any defective parts during the warranty period, provided such parts are returned, prepaid, to UAS' factory. UAS' liability is limited to furnishing replacement parts F.O.B. UAS' factory or making repairs to any parts which are determined, upon inspection by UAS, to be defective. UAS is not responsible for labor or transportation charges for the removal, reshipment or reinstallation of equipment.

UAS WILL NOT BE RESPONSIBLE FOR ANY SPECIAL OR CONSEQUENTIAL DAMAGES.



To Order: Contact ACS, Inc.  
(800) 878-5030